

**PARTITION & DRAFT CURTAIN TABLE OF CONTENTS**

Draft Curtain Information And Specifications .....	2
Partition Information And Specifications .....	2
Partition Wall Details.....	3
IH0010 – 8” System Transverse Partition Wall .....	3
IH0020 – Transverse Partition Wall Section Cuts – Purlins .....	
4 IH0030 – Transverse Partition Wall Section Cuts – Joists .....	
5 IH0040 – Longitudinal Partition Wall .....	
6 IH0050 – Longitudinal Partition Wall Section Cuts .....	
7	
IH0070 – Longitudinal Partition Wall Section Cuts – Joists To Strut Conn. ....	8
Draft Curtain Details .....	9
IJ0010 – Transverse Draft Curtain W/ Purlins – Horizontal Bottom Support .....	9
IJ0020 – Transverse Draft Curtain W/ Purlins – Parallel Supports .....	10
IJ0040 – Transverse Draft Curtain W/ Joists – Horizontal Bottom Support .....	11
IJ0060 – Transverse Draft Curtain W/ Joists – Away From Main Frame Rafter	12
IJ0070 – Longitudinal Draft Curtain W/ Joists .....	13
Recessed Endwall Details .....	14
GA0002 – Recessed Endwall Detail .....	14

### **DRAFT CURTAIN INFORMATION AND SPECIFICATIONS**

Additional information Valley Steel standard draft curtains is available at the Valley Steel Building Systems website at the below link.

Valley Steel Standard Draft Curtain

### **PARTITION INFORMATION AND SPECIFICATIONS**

Additional information Valley Steel standard partition walls is available at the Valley Steel Building Systems website at the below link.

Valley Steel Standard Partition Wall

The following pages provide standard Draft Curtain and Partition Wall details.



LAST REVISION  
DATE: 03/11/15  
BY: AAJ CHK: MDK

LAST REVISION DETAIL NAME IF APPLICABLE  
DATE: 02/16/15 **7.4.3**  
BY: AK CHK: EGB

|

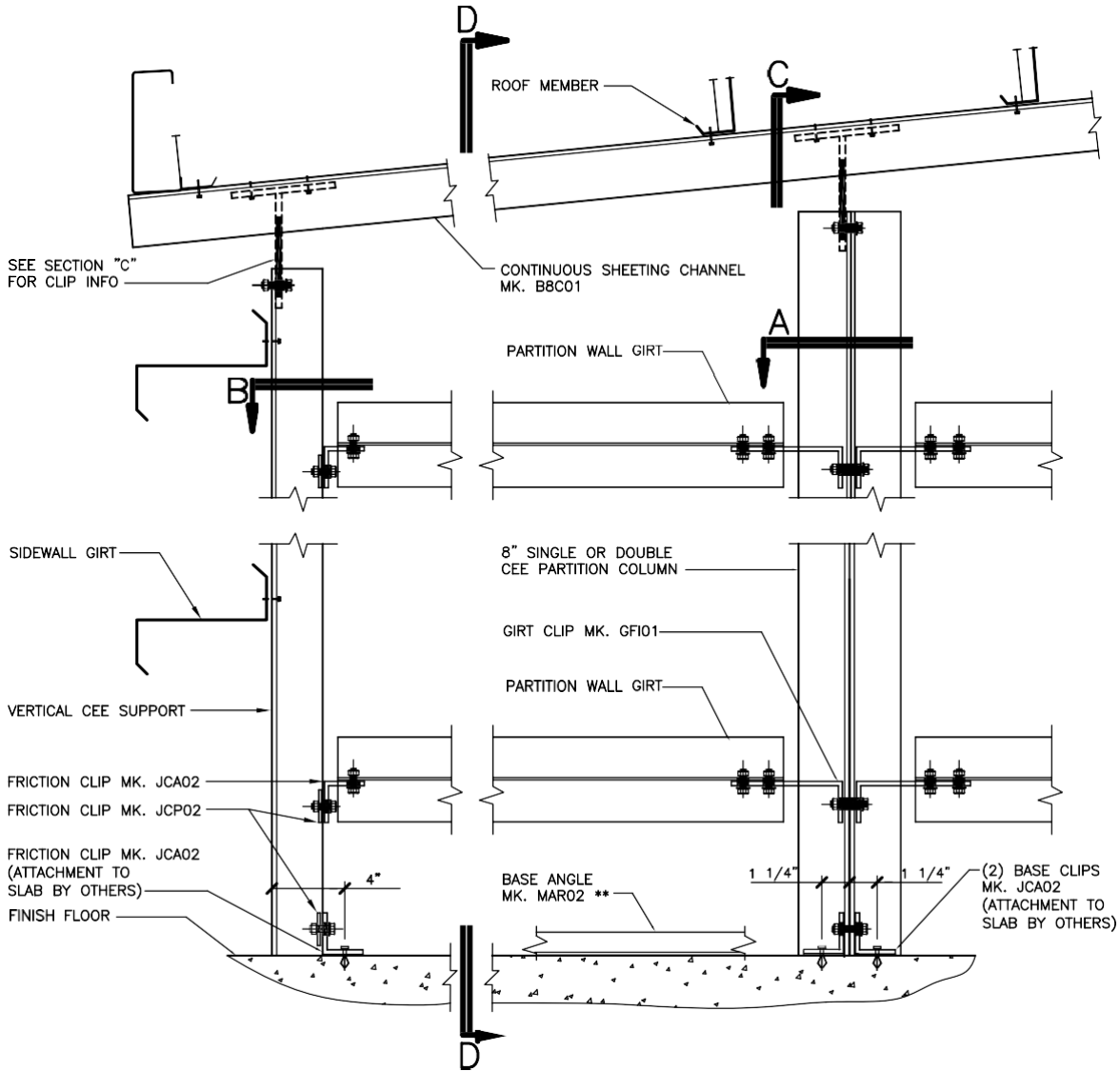
|



## PRODUCT & ENGINEERING MANUAL

### PARTITION WALL DETAILS

#### IH0010 – 8” SYSTEM TRANSVERSE PARTITION WALL



### TRANSVERSE PARTITION WALL

8" SYSTEM - SINGLE SHEETED NOTE: USE 1/2" X 1-1/4" A307  
BOLTS H0500/NUTS H0400.  
REFERENCE ERECTOR NOTE FOR TYPICAL WASHER REQUIREMENTS.  
SEE STRUCTURAL ELEVATIONS FOR GIRT/COLUMN MARK NUMBERS.  
\*\* - FASTEN AT 3'-0" O.C. MAX (FASTENERS NOT BY NUCOR)

IH0010

LAST REVISION DETAIL NAME IF APPLICABLE

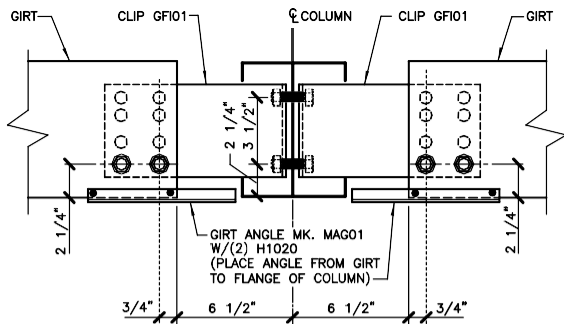
DATE: 02/16/15 **7.4.5**

BY: AK CHK: EGB



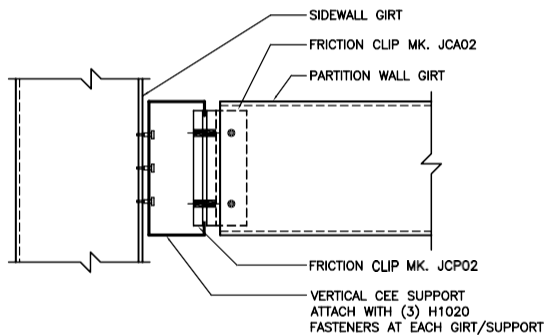
IH0010.DWG

**IH0020 – TRANSVERSE PARTITION WALL SECTION CUTS – PURLINS**



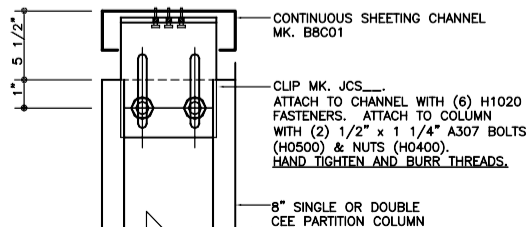
**SECTION "A" TRANSVERSE PARTITION WALL GIRT TO COLUMN**

NOTE: USE (6) 1/2" X 1 1/4" A307 BOLTS H0500/NUTS H0400.  
REFERENCE ERECTOR NOTE FOR TYPICAL WASHER REQUIREMENTS.



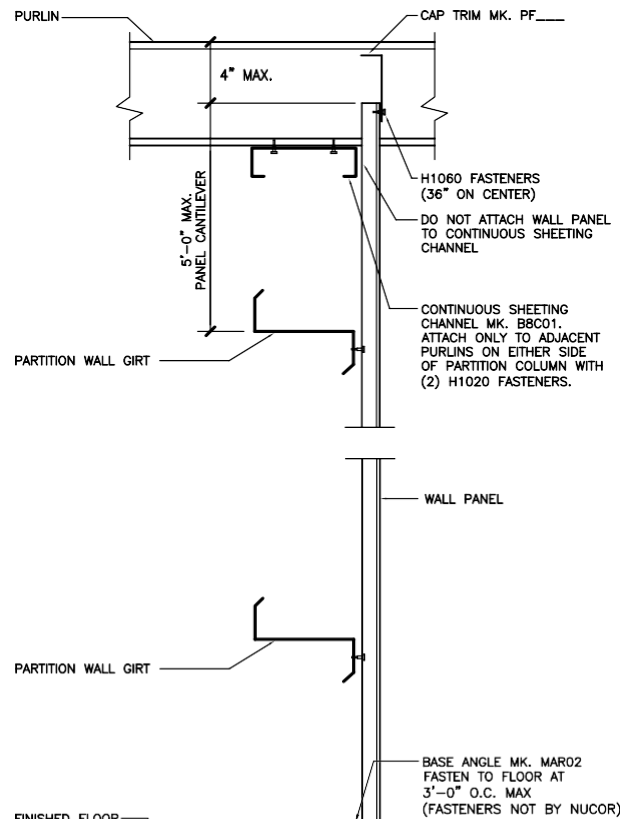
**SECTION "B" GIRTS CONNECTION TO VERTICAL CEE SUPPORT**

NOTE: USE (4) 1/2" X 1 1/4" A307 BOLTS H0500/NUTS H0400 U.N.O.  
REFERENCE ERECTOR NOTE FOR TYPICAL WASHER REQUIREMENTS.



**SECTION "C" TRANSVERSE PARTITION COLUMN TO CHANNEL**

REFERENCE ERECTOR NOTE FOR TYPICAL WASHER REQUIREMENTS.



**SECTION "D-D" FULL HEIGHT SECTION AT PARTITION WALL**

SEE WALL SHEETING ERECTION NOTES FOR WALL PANEL FASTENER LOCATIONS

IH0020



**- LONGITUDINAL PARTITION WALL**

LAST REVISION

DETAIL NAME IF APPLICABLE

02/16/15

**IH0020.DWG**

BY: EGB

PRODUCT & ENGINEERING MANUAL

**IH0030 – TRANSVERSE PARTITION WALL SECTION CUTS – JOISTS**

LAST REVISION

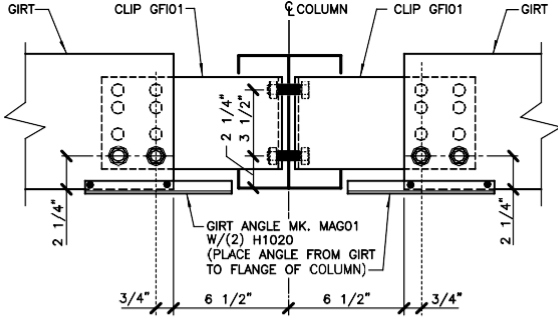
DETAIL NAME IF APPLICABLE

DATE: 02/16/15 **7.4.**

**8**

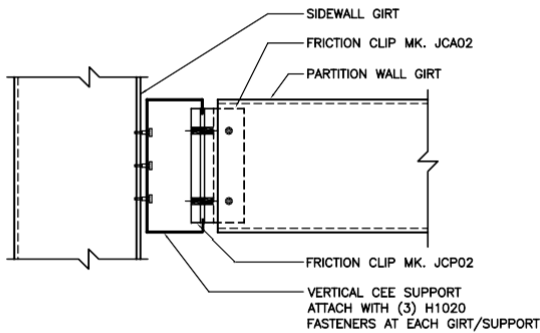
BY: AK CHK: EGB





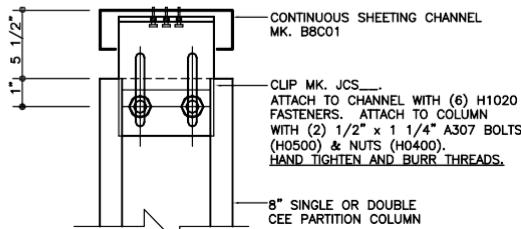
**SECTION "A" TRANSVERSE PARTITION WALL GIRT TO COLUMN**

NOTE: USE (6) 1/2" X 1 1/4" A307 BOLTS H0500/NUTS H0400.  
REFERENCE ERECTOR NOTE FOR TYPICAL WASHER REQUIREMENTS.



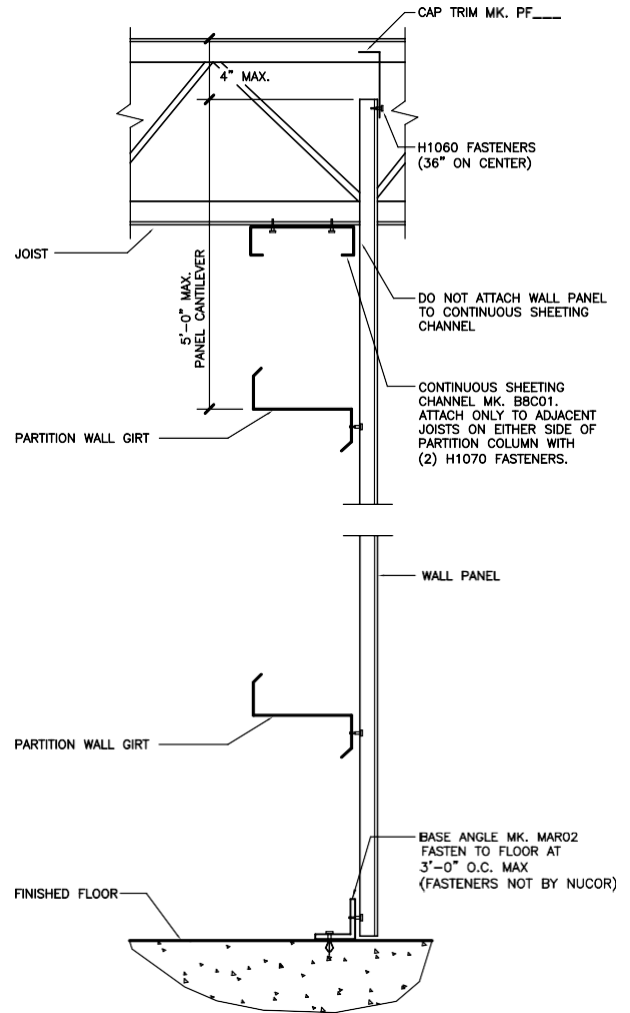
**SECTION "B" GIRT CONNECTION TO VERTICAL CEE SUPPORT**

NOTE: USE (4) 1/2" X 1 1/4" A307 BOLTS H0500/NUTS H0400 U.N.O.  
REFERENCE ERECTOR NOTE FOR TYPICAL WASHER REQUIREMENTS.



**SECTION "C" TRANSVERSE PARTITION COLUMN TO CHANNEL**

REFERENCE ERECTOR NOTE FOR TYPICAL WASHER REQUIREMENTS.



**SECTION "D-D" FULL HEIGHT SECTION AT PARTITION WALL**

SEE WALL SHEETING ERECTION NOTES FOR WALL PANEL FASTENER LOCATIONS

IH0030

LAST REVISION

DATE: 02/16/15 **7.4.**

BY: AK CHK: EGB

DETAIL NAME IF APPLICABLE

**9**



**V A L L E Y**  
**S T E E L**  
CONSTRUCTION INC.

# PRODUCT & ENGINEERING MANUAL

- LONGITUDINAL PARTITION WALL

IH0030.DWG

IH0040

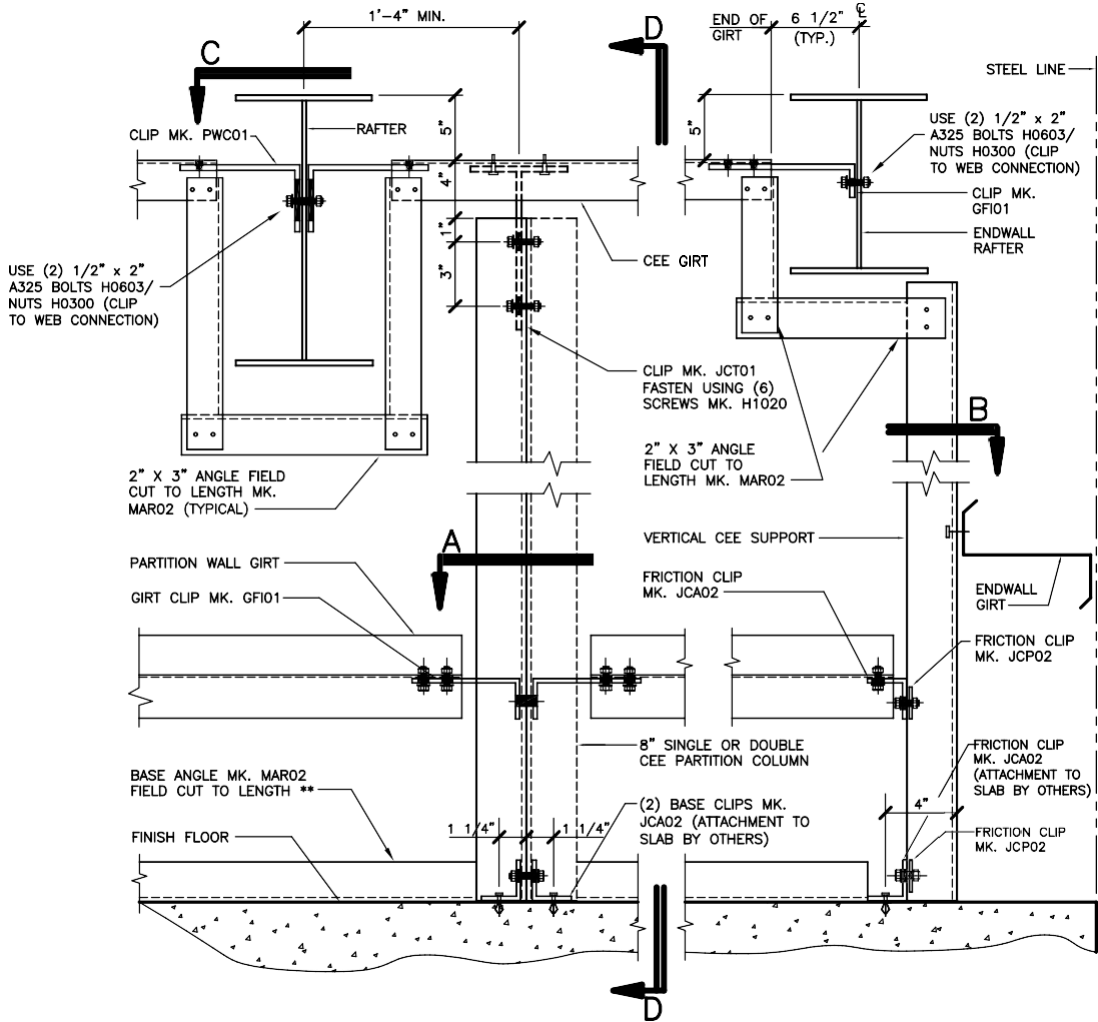
LAST REVISION

DATE: 02/16/15 **7.4.**

BY: AK CHK: EGB

DETAIL NAME IF APPLICABLE

**10**



**LONGITUDINAL PARTITION WALL**

8" SYSTEM NOTE: USE 1/2" X 1-1/4" A307 BOLTS/NUTS U.N.O. REFERENCE ERECTOR NOTE FOR TYPICAL WASHER REQUIREMENTS. SEE STRUCTURAL ELEVATIONS FOR GIRT/COLUMN MARK NUMBERS. \*\* - FASTEN AT 3'-0" O.C. MAX (FASTENERS NOT BY NUCOR).

IH0040

LAST REVISION

DATE: 02/16/15 **7.4.**

BY: AK CHK: EGB

DETAIL NAME IF APPLICABLE

**11**



**V A L L E Y**  
**S T E E L**  
CONSTRUCTION INC.

# PRODUCT & ENGINEERING MANUAL

- LONGITUDINAL PARTITION WALL

IH0040.DWG

LAST REVISION  
DATE: 02/16/15 **7.4.**  
BY: AK CHK: EGB

DETAIL NAME IF APPLICABLE  
**12**



**V A L L E Y  
S T E E L**  
CONSTRUCTION INC.  
**LONGITUDINAL PARTITION WALL**

**PRODUCT & ENGINEERING MANUAL**

**IH0050 –**

**SECTION CUTS**

LAST REVISION

DATE: 02/16/15 **7.4.**

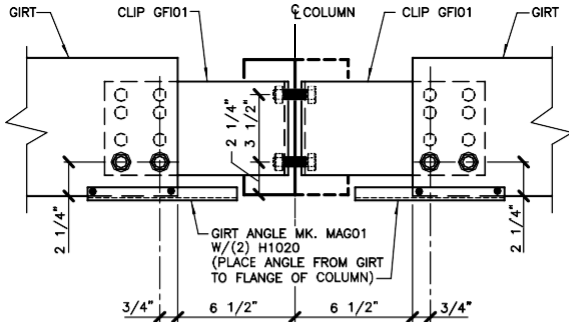
BY: AK CHK: EGB

DETAIL NAME IF APPLICABLE

**13**

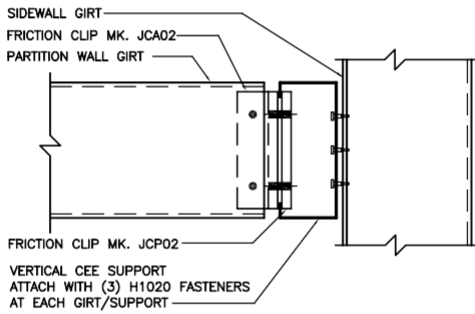


**- LONGITUDINAL PARTITION WALL**



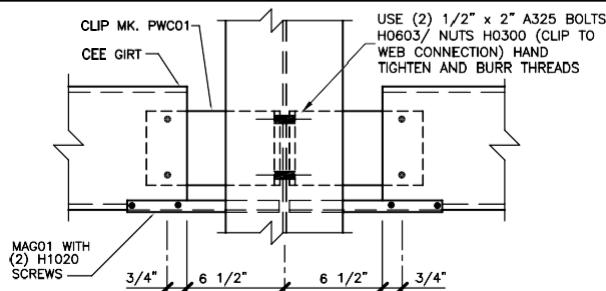
**SECTION "A" LONGITUDINAL PARTITION WALL GIRTS TO COLUMN**

NOTE: USE (6) 1/2" X 1 1/4" A307 BOLTS H0500/NUTS H0400.  
REFERENCE ERECTOR NOTE FOR TYPICAL WASHER REQUIREMENTS.



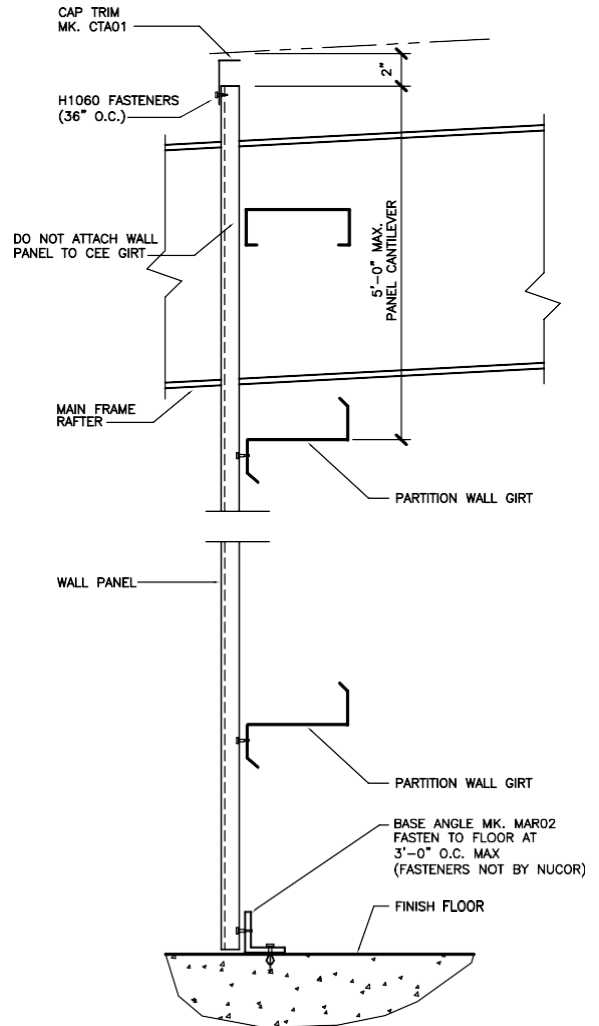
**SECTION "B" GIRTS CONNECTION TO VERTICAL CEE SUPPORT**

NOTE: USE (4) 1/2" X 1 1/4" A307 BOLTS H0500/NUTS H0400 U.N.O.  
REFERENCE ERECTOR NOTE FOR TYPICAL WASHER REQUIREMENTS.



**SECTION "C" LONGITUDINAL PARTITION WALL TO RAFTER**

NOTE: USE (4) 1/2" X 1 1/4" A307 BOLTS H0500/NUTS H0400.  
REFERENCE ERECTOR NOTE FOR TYPICAL WASHER REQUIREMENTS.



**SECTION "D-D" FULL HEIGHT SECTION AT PARTITION WALL**

SEE WALL SHEETING ERECTION NOTES FOR WALL PANEL FASTENER LOCATIONS

IH0050

LAST REVISION

DATE: 02/16/15 **7.4.**

BY: AK CHK: EGB

DETAIL NAME IF APPLICABLE

**14**



IH0050.DWG

IH0070

SECTION CUTS – JOISTS TO STRUT CONN.

LAST REVISION

DATE: 02/16/15

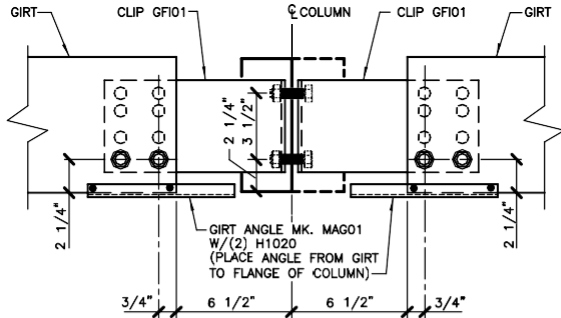
BY: AK CHK: EGB

DETAIL NAME IF APPLICABLE

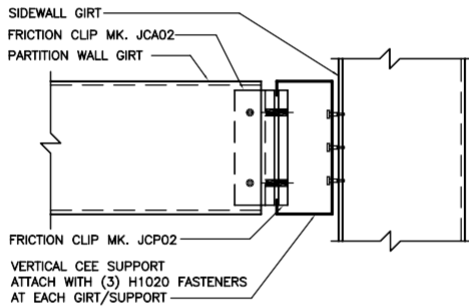
**7.4.15**



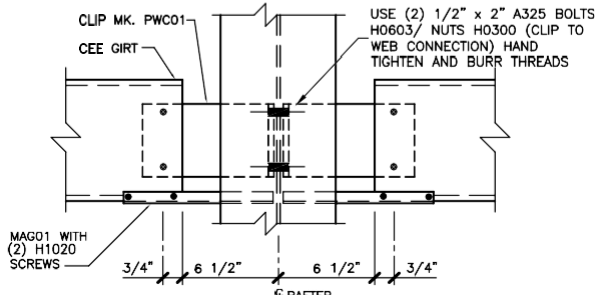
**- LONGITUDINAL PARTITION WALL**



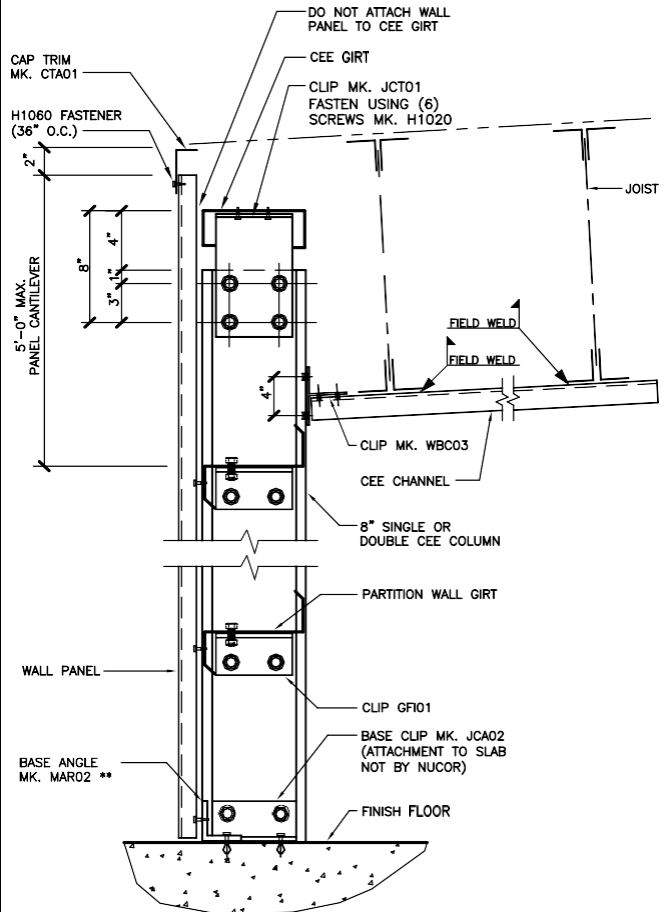
**SECTION "A" LONGITUDINAL PARTITION WALL GIRTS TO COLUMN**  
NOTE: USE (6) 1/2" X 1 1/4" A307 BOLTS H0500/NUTS H0400.  
REFERENCE ERECTOR NOTE FOR TYPICAL WASHER REQUIREMENTS.



**SECTION "B" GIRTS CONNECTION TO VERTICAL CEE SUPPORT**  
NOTE: USE (4) 1/2" X 1 1/4" A307 BOLTS H0500/NUTS H0400 U.N.O.  
REFERENCE ERECTOR NOTE FOR TYPICAL WASHER REQUIREMENTS.



**SECTION "C" LONGITUDINAL PARTITION WALL TO RAFTER**  
NOTE: USE (4) 1/2" X 1 1/4" A307 BOLTS H0500/NUTS H0400.  
REFERENCE ERECTOR NOTE FOR TYPICAL WASHER REQUIREMENTS.



**SECTION "D-D" FULL HEIGHT SECTION AT PARTITION WALL**  
NOTE: USE 1/2" X 1 1/4" A307 BOLTS H0500/NUTS H0400 U.N.O.  
REFERENCE ERECTOR NOTE FOR TYPICAL WASHER REQUIREMENTS  
SEE WALL SHEETING ERECTION NOTES FOR WALL PANEL FASTENER LOCATIONS  
\*\* - FASTEN AT 3'-0" MAX (FASTENERS NOT BY NUCOR)

IH0070

LAST REVISION

DATE: 02/16/15 **7.4.**

BY: AK CHK: EGB

DETAIL NAME IF APPLICABLE

**16**





IH0070.DWG

## PRODUCT & ENGINEERING MANUAL

### DRAFT CURTAIN DETAILS

IJ0010 – TRANSVERSE DRAFT CURTAIN W/ PURLINS – HORIZONTAL BOTTOM SUPPORT

LAST REVISION

DATE: 02/16/15

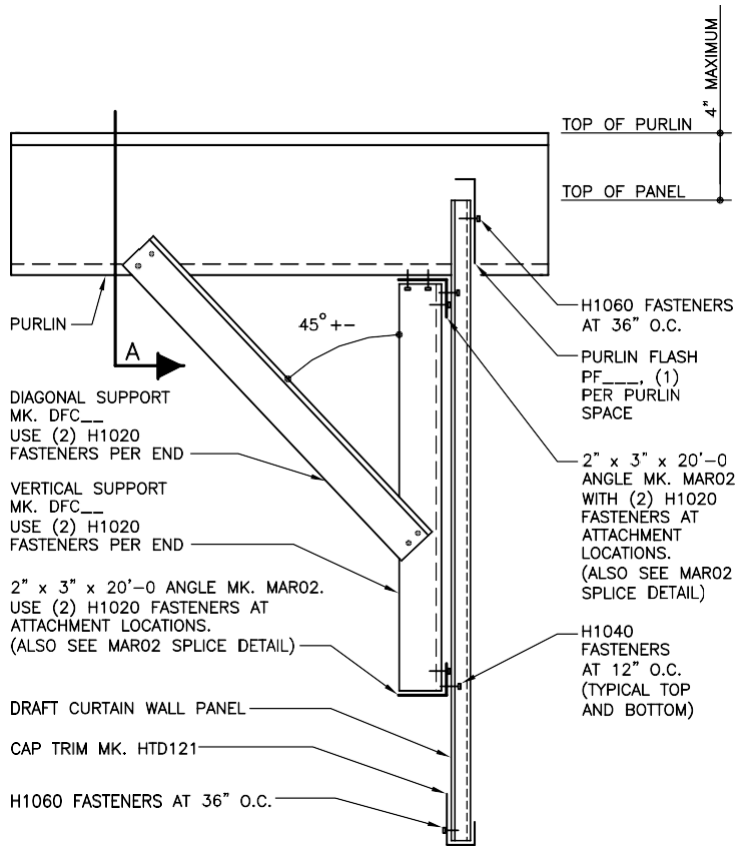
BY: AK CHK: EGB

DETAIL NAME IF APPLICABLE

**7.4.17**



**- LONGITUDINAL PARTITION WALL**

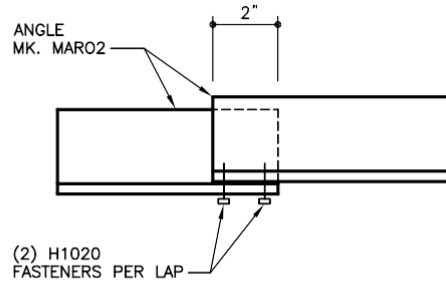


**ERECTION NOTES:**

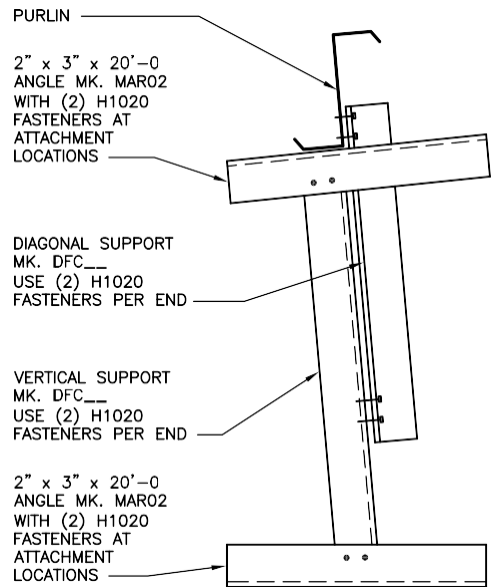
- 1) DIAGONAL & VERTICAL SUPPORTS RUN WITH THE ROOF SLOPE
- 2) SEE ELEVATION DRAWINGS FOR SUPPORT LOCATIONS
- 3) VERTICAL SUPPORTS ARE TO HAVE A MAXIMUM SPACING OF 11'-0"
- 4) FIELD COPE PANELS AT PURLINS AS REQUIRED

**DRAFT CURTAIN DETAIL**  
TRANSVERSE DRAFT CURTAIN

IJ0010



**MAR02 SPLICE DETAIL**



**SECTION A**

LAST REVISION

DATE: 02/16/15 **7.4.**

BY: AK CHK: EGB

DETAIL NAME IF APPLICABLE

**18**



IJ0010.DWG

LAST REVISION  
DATE: 02/16/15  
BY: AK CHK: EGB

DETAIL NAME IF APPLICABLE  
**7.4.19**

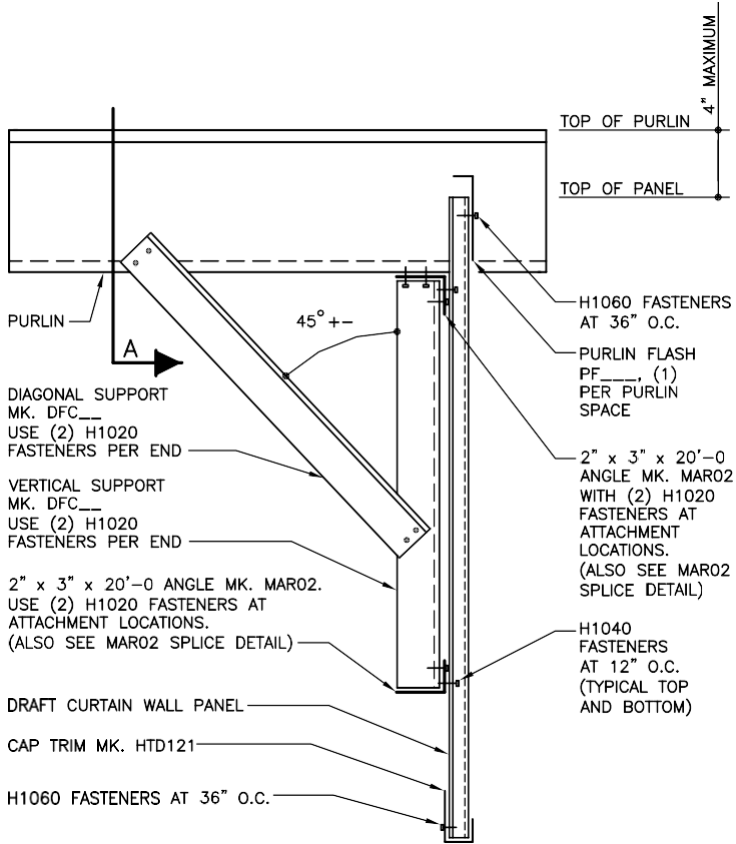


-

**IJ0020 TRANSVERSE DRAFT CURTAIN W/ PURLINS – PARALLEL SUPPORTS**

LAST REVISION  
DATE: 02/16/15  
BY: AK CHK: EGB

DETAIL NAME IF APPLICABLE  
**7.4.20**

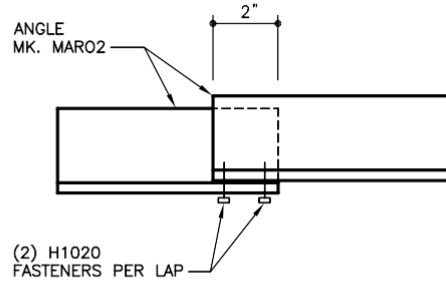


**ERECTION NOTES:**

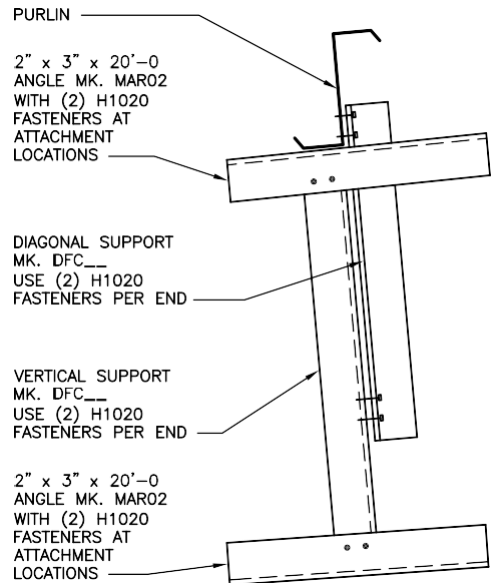
- 1) DIAGONAL & VERTICAL SUPPORTS RUN WITH THE ROOF SLOPE
- 2) SEE ELEVATION DRAWINGS FOR SUPPORT LOCATIONS
- 3) VERTICAL SUPPORTS ARE TO HAVE A MAXIMUM SPACING OF 11'-0"
- 4) FIELD COPE PANELS AT PURLINS AS REQUIRED

**DRAFT CURTAIN DETAIL**  
TRANSVERSE DRAFT CURTAIN

IJ0020



**MAR02 SPLICE DETAIL**



**SECTION A**

IJ0020.DWG

LAST REVISION  
DATE: 02/16/15  
BY: AK CHK: EGB

DETAIL NAME IF APPLICABLE  
**7.4.21**



# PRODUCT & ENGINEERING MANUAL

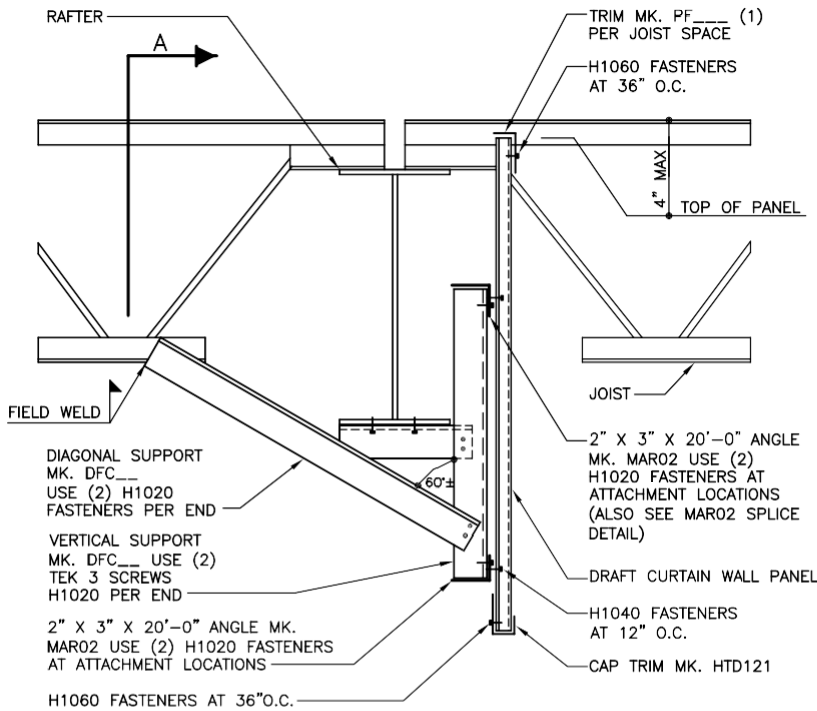
-

## PRODUCT & ENGINEERING MANUAL

### IJ0040 – TRANSVERSE DRAFT CURTAIN W/ JOISTS – HORIZONTAL BOTTOM SUPPORT

LAST REVISION  
DATE: 02/16/15  
BY: AK CHK: EGB

DETAIL NAME IF APPLICABLE  
**7.4.22**



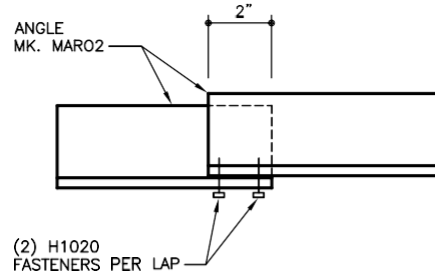
**ERECTION NOTES:**

- 1) DIAGONAL & VERTICAL SUPPORTS RUN WITH THE ROOF SLOPE
- 2) SEE ELEVATION DRAWINGS FOR SUPPORT LOCATIONS
- 3) VERTICAL SUPPORTS ARE TO HAVE A MAXIMUM SPACING OF 11'-0"
- 4) FIELD COPE PANELS AT JOISTS AS REQUIRED

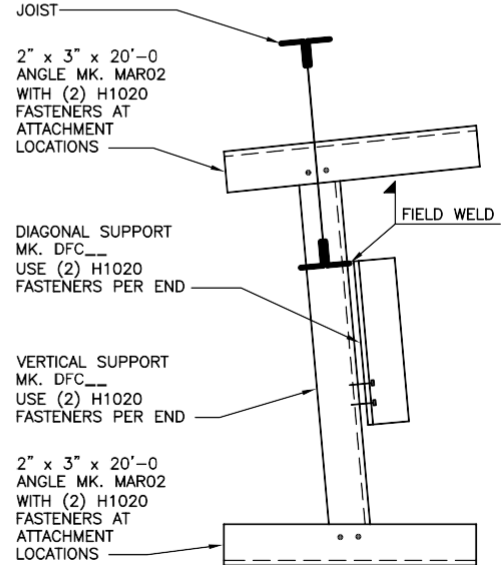
**DRAFT CURTAIN DETAIL AT JOIST**

TRANSVERSE DRAFT CURTAIN

IJ0040



**MAR02 SPLICE DETAIL**



**SECTION A**

RAFTER NOT SHOWN  
FOR CLARITY

LAST REVISION

DATE: 02/16/15

BY: AK CHK: EGB

DETAIL NAME IF APPLICABLE

**7.4.23**



-

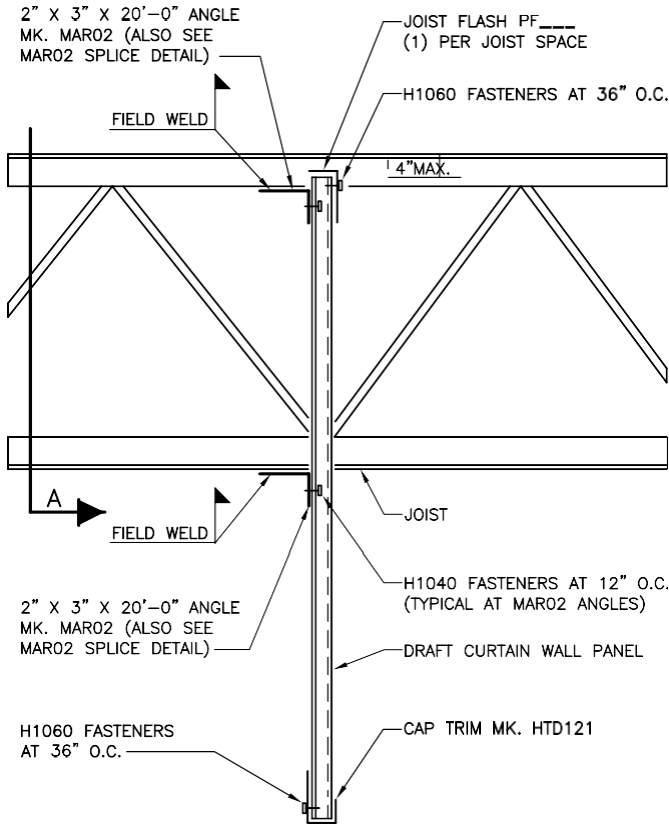
IJ0040.DWG

IJ0060 TRANSVERSE DRAFT CURTAIN W/ JOISTS – AWAY FROM MAIN FRAME RAFTER

LAST REVISION  
DATE: 02/16/15  
BY: AK CHK: EGB

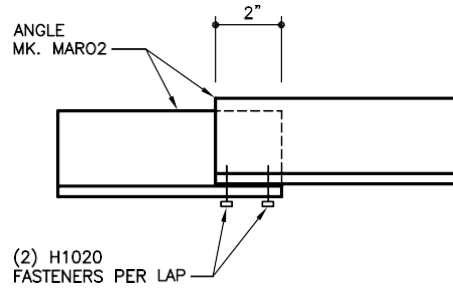
DETAIL NAME IF APPLICABLE  
**7.4.24**



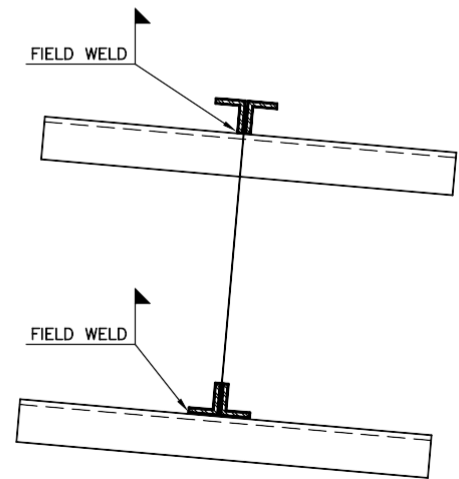


**DRAFT CURTAIN DETAIL AT JOIST**  
TRANSVERSE DRAFT CURTAIN

IJ0060



**MAR02 SPLICE DETAIL**



**SECTION A**

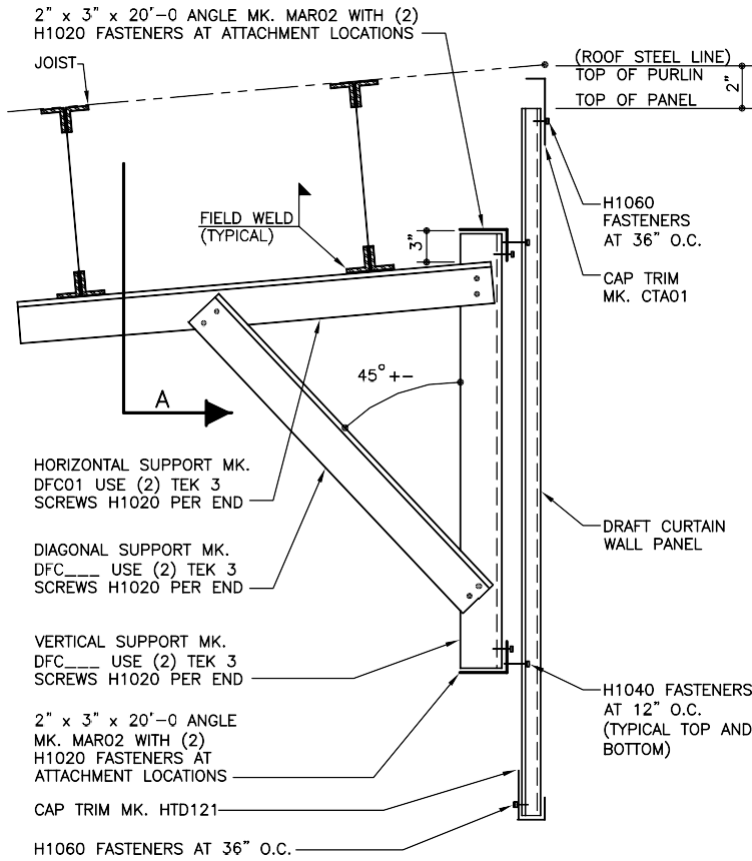
IJ0060.DWG

LAST REVISION  
DATE: 02/16/15  
BY: AK CHK: EGB

DETAIL NAME IF APPLICABLE  
**7.4.25**



**IJ0070 – LONGITUDINAL DRAFT CURTAIN W/ JOISTS**



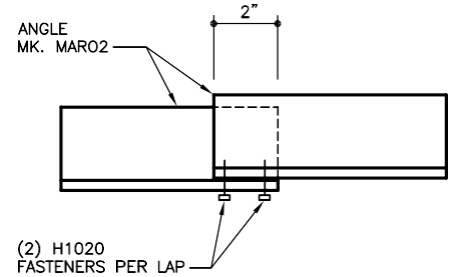
**ERECTION NOTES:**

- 1) SEE ELEVATION DRAWINGS FOR SUPPORT LOCATIONS
- 2) HORIZONTAL SUPPORT MUST BE FASTENED TO (2) JOISTS
- 3) FIELD CUT PANELS AT RAFTERS AS REQUIRED

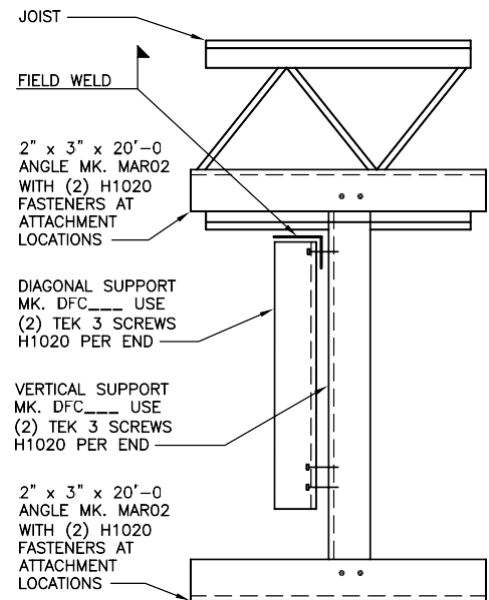
**DRAFT CURTAIN DETAIL**

LONGITUDINAL DRAFT CURTAIN

IJ0070



**MAR02 SPLICE DETAIL**



**SECTION A**

LAST REVISION

DATE: **7.4.26**

BY: AK CHK: EGB

DETAIL NAME IF APPLICABLE



# PRODUCT & ENGINEERING MANUAL

IJ0070.DWG

## RECESSED ENDWALL DETAILS

GA0002 – RECESSED ENDWALL DETAIL

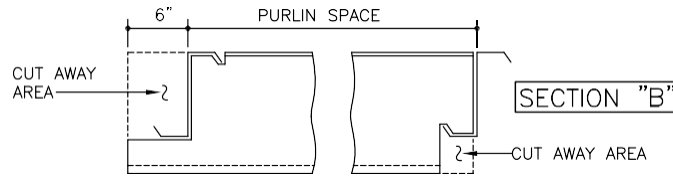
LAST REVISION

DATE: 02/16/15

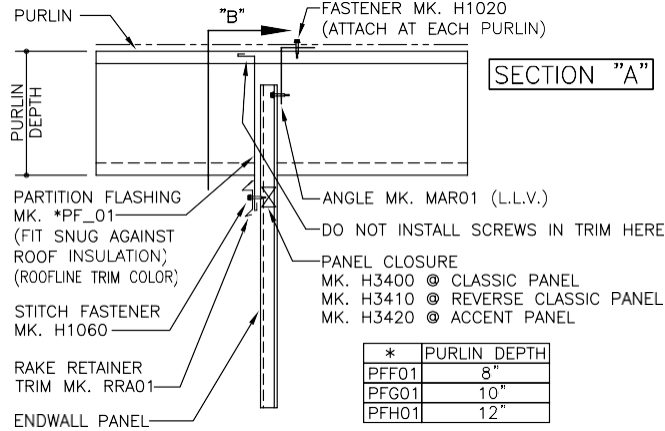
BY: AK CHK: EGB

DETAIL NAME IF APPLICABLE

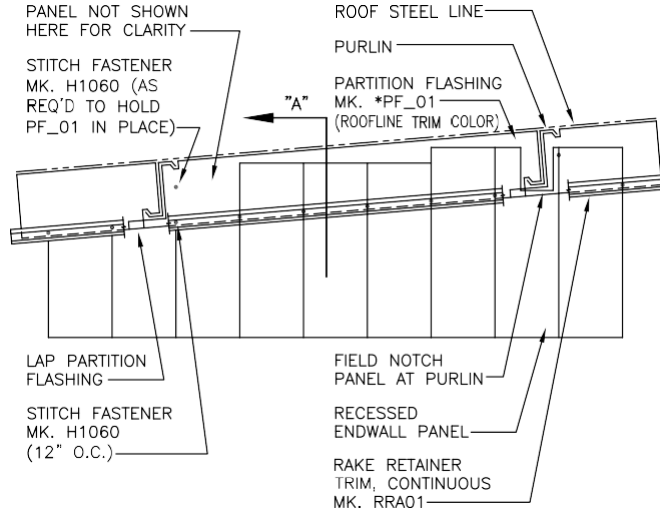
**7.4.27**



PARTITION FLASHING MUST BE CUT TO LENGTH AND NOTCHED IN THE FIELD.  
FIELD WORK OF FLASHING WILL BE REQUIRED AT ALL PURLINS, EAVES AND RIDGES.



ROOF SHEETING AND ROOF INSULATION NOT SHOWN FOR CLARITY



**RECESSED ENDWALL DETAIL**

AT EXPOSED RECESSED ENDWALL

**GA0002**

02/16/15

**GA0002.DWG**

LAST REVISION  
DATE: **7.4.28**  
BY: AK CHK: EGB

DETAIL NAME IF APPLICABLE